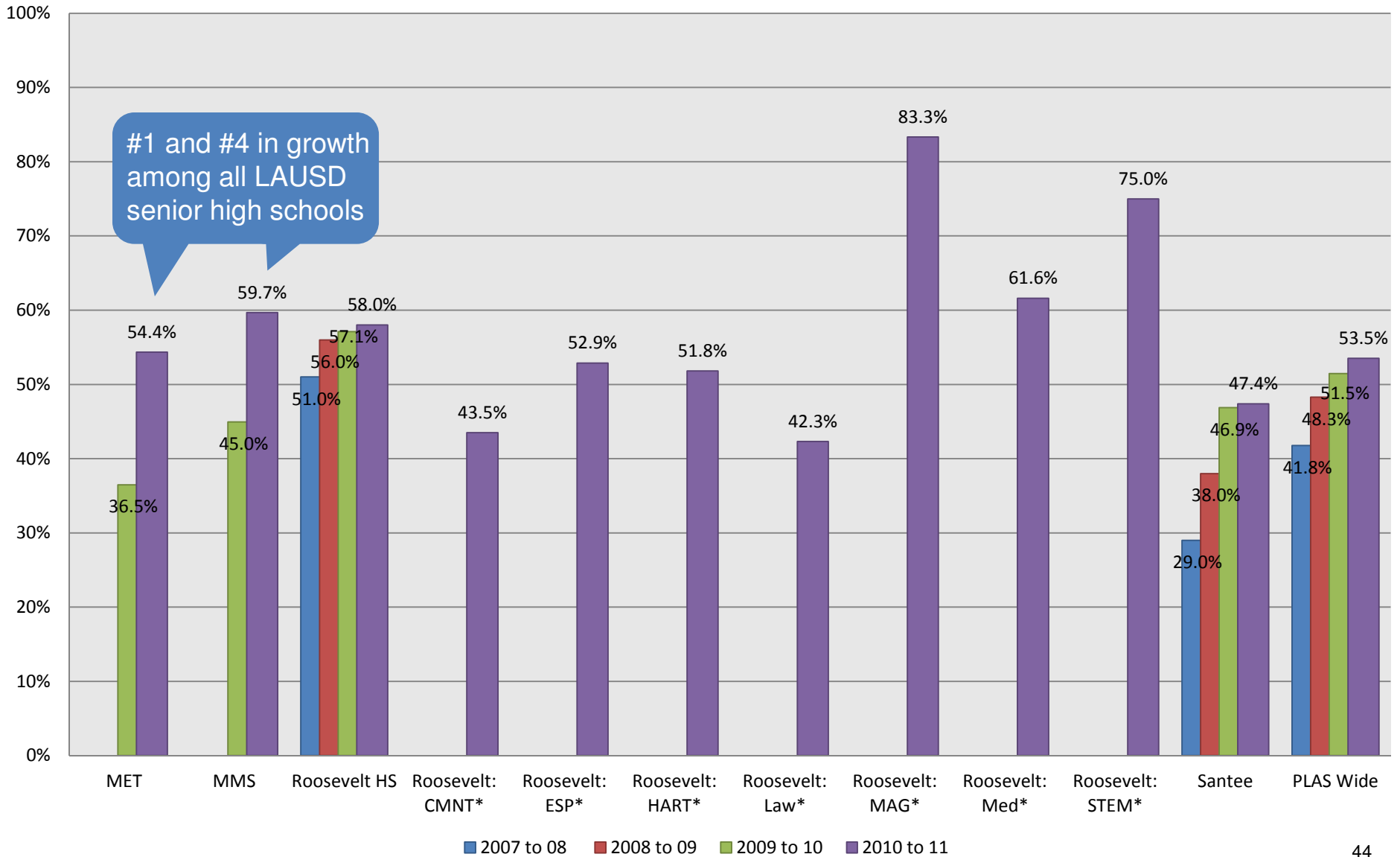


Update on California High School Exit Exam (CAHSEE) Results to Date

California High School Exit Exam (CAHSEE) highlights

- All Partnership high schools have gains in CAHSEE pass rates.
- Pass rates have risen 2% compared to last year network-wide.
- This is a lower rate of improvement than previous years (2009-10 growth was 3.2%).
- We had strong gains at Mendez that were offset by slower gains at Roosevelt and Santee.

California High School Exit Exam (CAHSEE) Results for 2010-2011



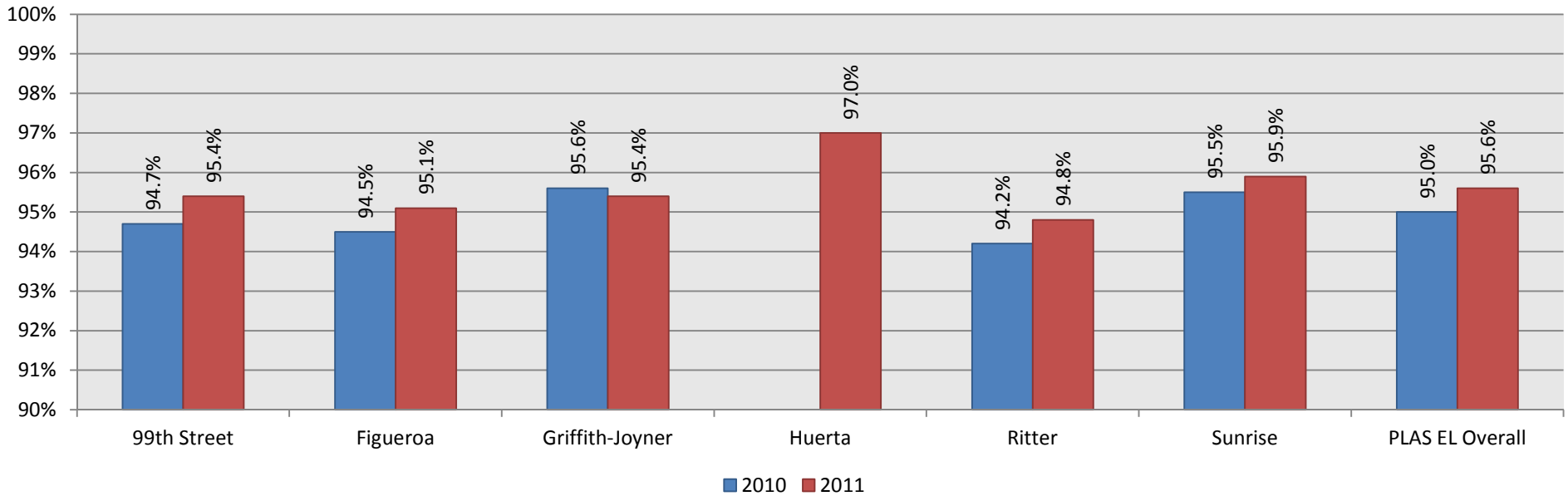
*Roosevelt 7 small schools. No previous comparable available

Note: In California, all high school students must pass the CAHSEE test to earn a high school degree. The test helps to ensure that students graduate with grade level skills in ELA and math. It is first taken in 10th grade. The results above shows the percent of 10th graders who pass both the ELA and Math section of the exam.

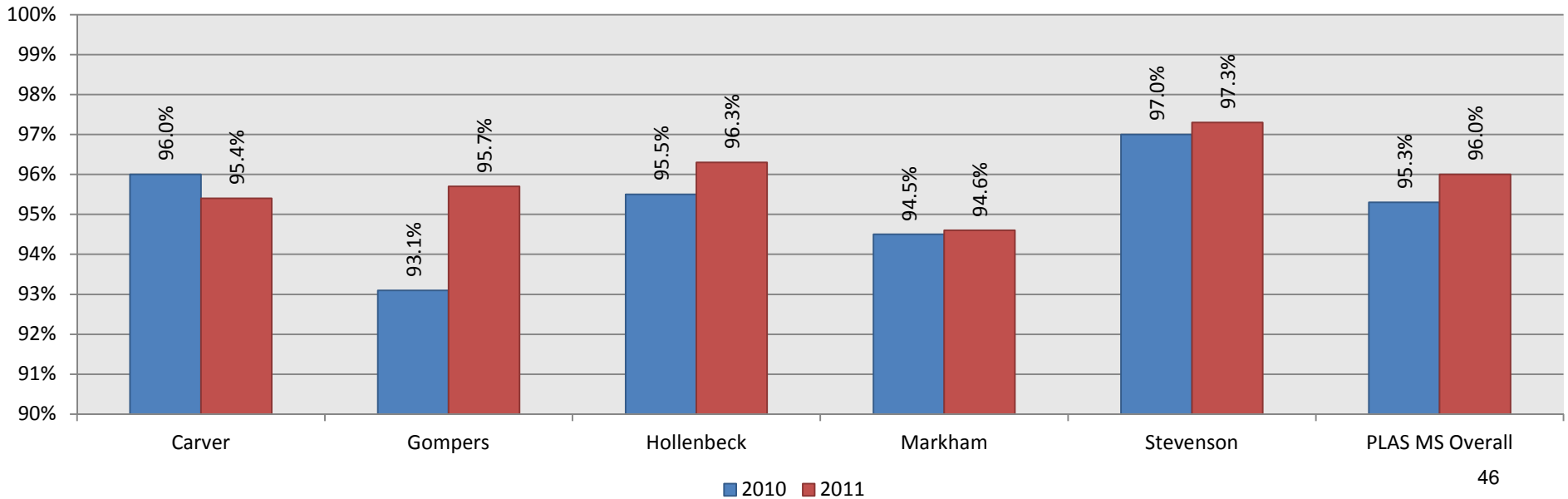
Attendance Highlights

- 16 out of 21 schools have higher attendance rates compared to last year.
- Very strong gains in Santee and Gompers attendance rates compared to last year.
- Schools that have lower attendance rates are Griffith-Joyner, Carver, Roosevelt-ESP, Roosevelt-HARTS and Roosevelt-STEM.

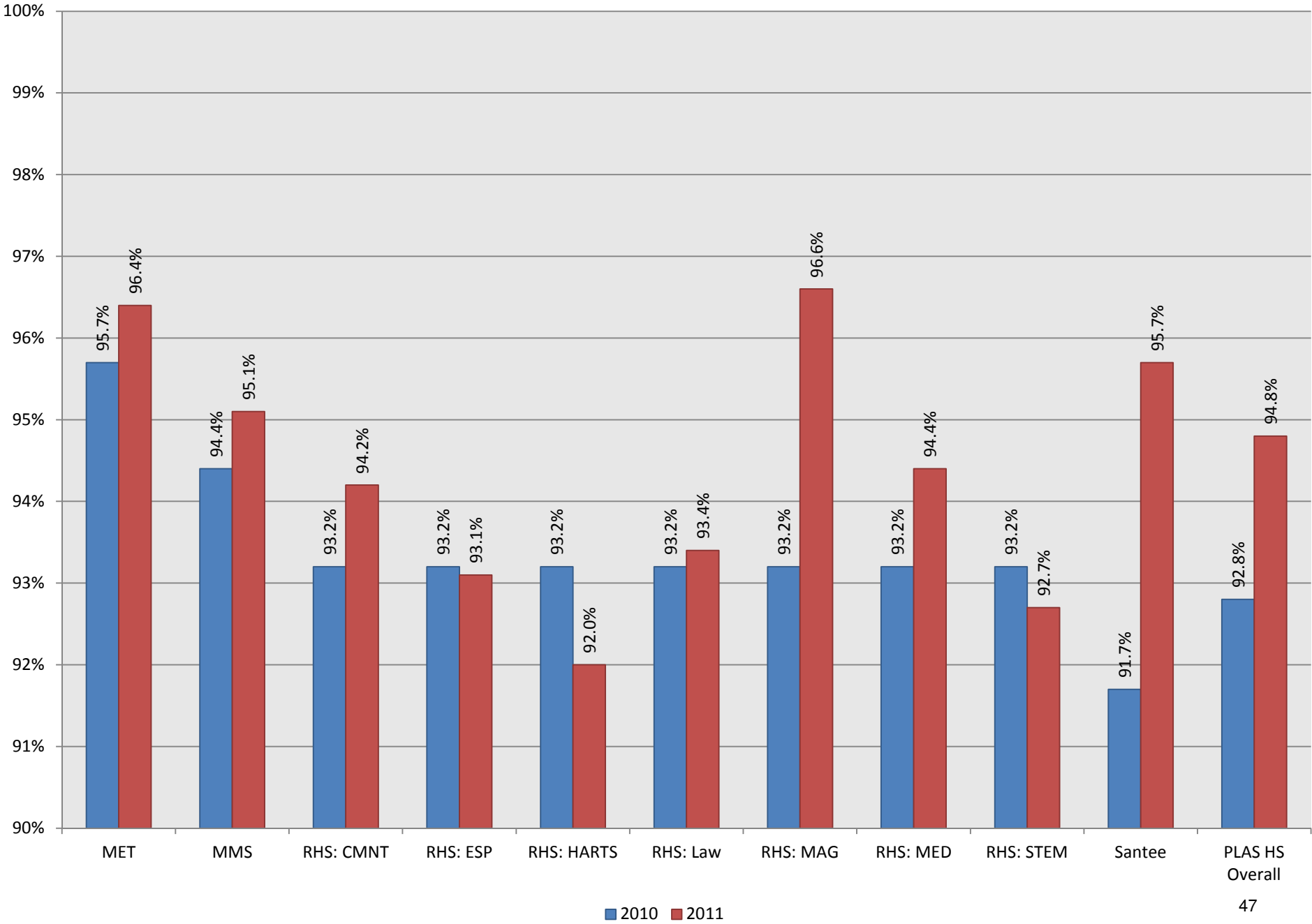
Elementary: May Attendance YTD 2009-10 vs. 2010-11



Middle School: May Attendance YTD 2009-10 vs. 2010-11



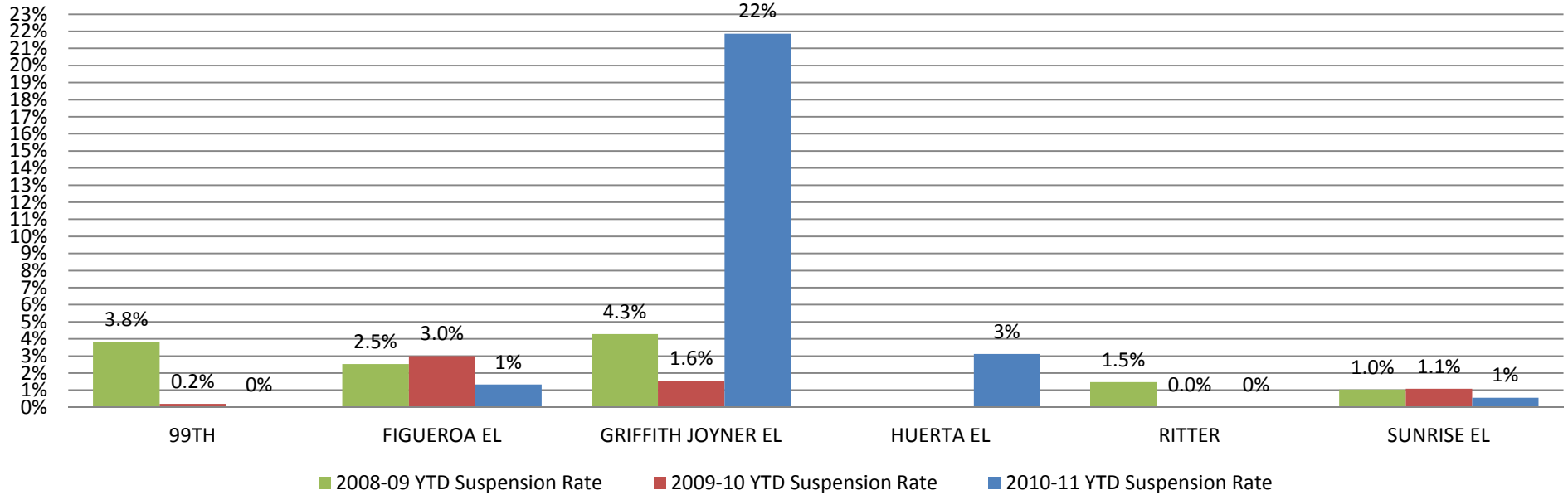
High School: May Attendance YTD 2009-10 vs. 2010-11



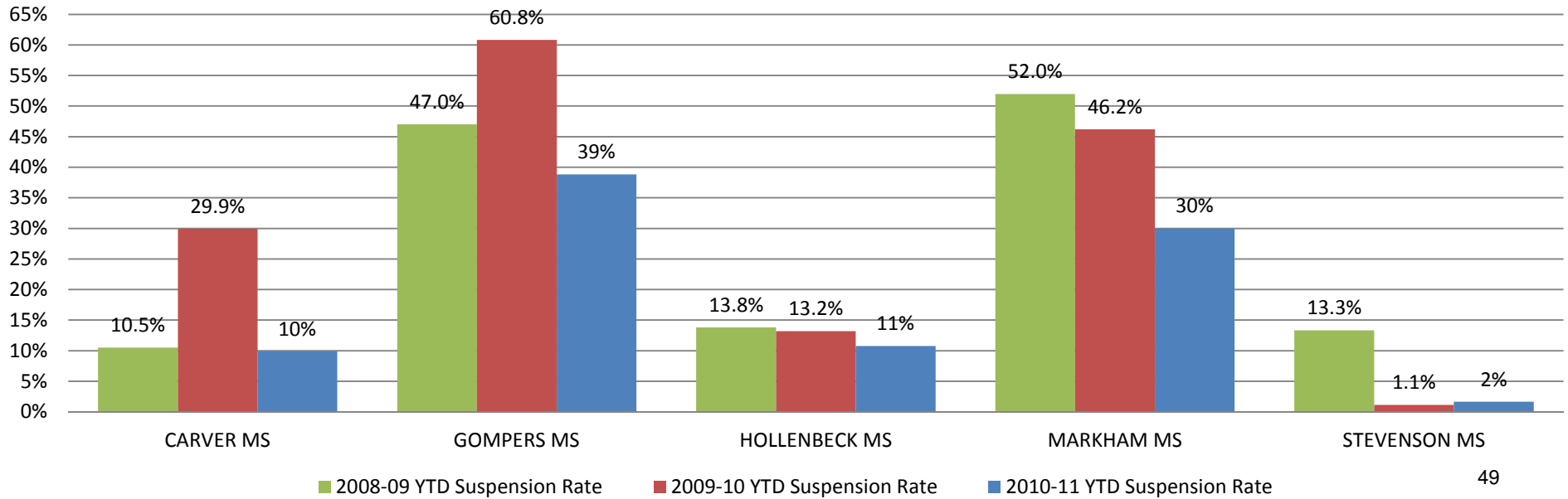
Suspension Highlights

- 14 out of 21 schools have lower suspension rates compared to last year's suspension rates.
- 4 out of 5 elementary schools have suspension rates under 2%.
- 3 out of 5 middle schools have significant drops in suspension rates compared to last year.
- Mendez Engineering & Technology had a 15% drop in suspension rates.
- Joyner and Mendez Math Science both had a substantial increase in suspensions.

Elementary School YTD Suspensions through Mid May 2011



Middle School YTD Suspensions through Mid-May 2011



High School YTD Suspensions through Mid-May 2011

